

**NIKKEN**

# NIKKEN TURNING TOOL FOR MULTI-TASKING MACHINE

**NEW SQUARE TOOL HOLDER & SIDE LOCK HOLDER**

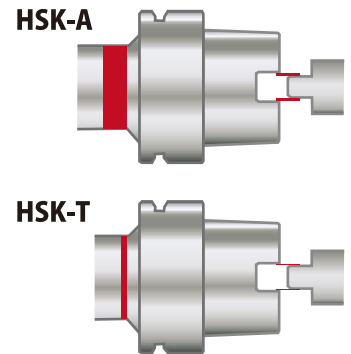
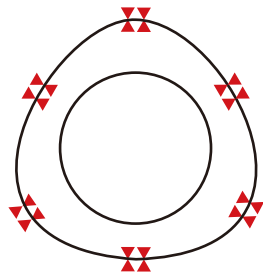
**NEW**



**HIGH ACCURACY, RIGIDITY NIKKEN MILL, TURN TOOLING SYSTEM**

# BEST SOLUTION FOR MULTI-TASKING

## 2 TYPES OF TOOL SHANK



### High accurate, high rigid polygon taper shank (ISO26623)

- ◆ Ideal face contact between 1/20 taper and flange
- ◆ Accuracy: high repeatability & positioning accuracy
- ◆ Rigidity: high flexural & torsional rigidity

### HSK-T tool shank, perfectly interchangeable with milling type HSK-A shank (ISO12164-3, JISB6064-3)

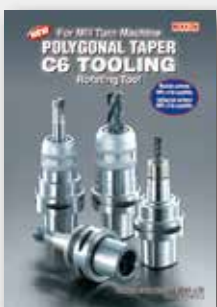
- ◆ Advanced face contact system optimized for turning
- ◆ Accuracy: strict fitting tolerance of drive-key
- ◆ Rigidity: controlled tool length optimized for turning

## Deliver a steady stream of both turning tools and milling tools

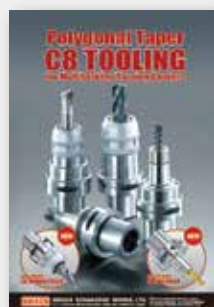
### TURNING TOOL

<b>NEW SQUARE TOOL HOLDER</b>	<b>45 degree</b>	C6 HSK-63T
	<b>90 degree</b>	C6 HSK-63T
	<b>180 degree</b>	C6 HSK-63T
<b>NEW SIDE LOCK HOLDER</b>		C6 HSK-63T

Refer to the following brochures for other tools.



C6 TOOLING



C8 TOOLING

### MILLING TOOL

\* Refer to C6 tooling, C8 tooling brochures.

● <b>SIDE LOCK HOLDER</b>	<b>Coming Soon</b>	C6 HSK-63T
● <b>FACE MILL ARBOR</b> (FOR HIGH FEED OIL-HOLE CUTTER)	<b>Coming Soon</b>	C6 HSK-63T
● <b>MILLING CHUCK</b>		C6/C8
● <b>SLIM CHUCK</b>		C6/C8
● <b>MAJOR DREAM MILLING CHUCK</b>		C6
● <b>MAJOR DREAM HOLDER</b>		C6
● <b>MAJOR DREAM PRO ENDMILL</b>		C6
● <b>MODULAR TYPE BORING HEAD</b>		C6

# TURNING SQUARE TOOL HOLDER

All tools are anti-rust treated.

**45**  
degree



## POLYGON TAPER C6

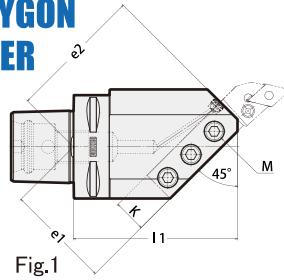


Fig.1

Layout shows left hand tool

## HSK-T

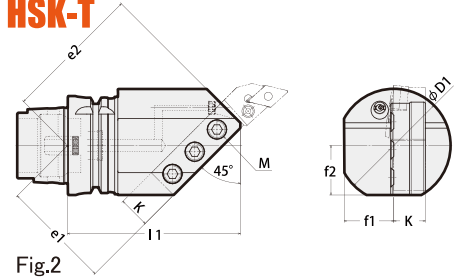


Fig.2

**NEW**

C6 type shown

TAPER SHANK	CODE No.	HAND	TOOL BIT SIZE	D1	I1	e1	e2	f1	f2	K	M	Fig.	WEIGHT (kg)
<b>C6</b>	C6-45-TH20R-100	R	20	70	100	64	82.5	29	31.5	20	12	1	2.3
	C6-45-TH20L-100	L											
	C6-45-TH25R-110	R	25	80	110	77	85	37.5	35	25			3.1
	C6-45-TH25L-110	L											
<b>HSK63T</b>	HSK63T-45-TH20R-110	R	20	72	110	70	88	31.6	31.5	20	12	2	2.5
	HSK63T-45-TH20L-110	L											
	HSK63T-45-TH25R-120	R	25	80	120	84	92	37.5	35	25			3.3
	HSK63T-45-TH25L-120	L											

**90**  
degree



## POLYGON TAPER C6

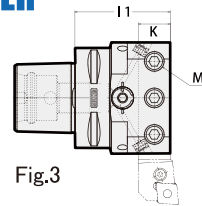


Fig.3

## HSK-T

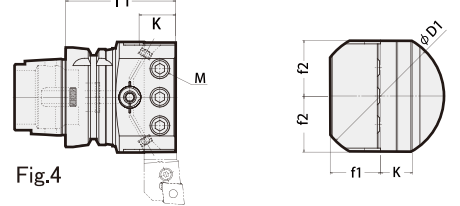


Fig.4

**NEW**

C6 type shown

TAPER SHANK	CODE No.	HAND	TOOL BIT SIZE	D1	I1	f1	f2	K	M	Fig.	WEIGHT (kg)
<b>C6</b>	C6-90-TH20N-60	N	20	80	60	31.6	35	20	12	3	1.7
	C6-90-TH25N-70		25		70			25			1.6
<b>HSK63T</b>	HSK63T-90-TH20N-70	N	20	80	70	31.6	33	20	12	4	1.9
	HSK63T-90-TH25N-80		25		80			34			25

**180**  
degree



## POLYGON TAPER C6

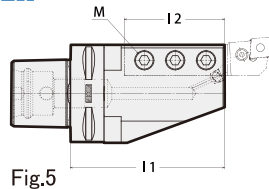


Fig.5

Layout shows right hand tool

## HSK-T

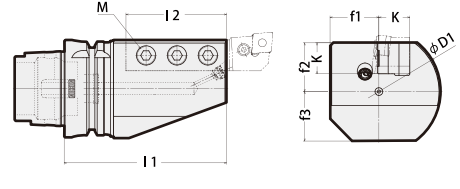


Fig.6

**NEW**

C6 type shown

TAPER SHANK	CODE No.	HAND	TOOL BIT SIZE	D1	I1	I2	f1	f2	f3	K	M	Fig.	WEIGHT (kg)	
<b>C6</b>	C6-180-TH20R-100	R	20	80	100	65	31.6	31.5	32	20	12	5	2.5	
	C6-180-TH20L-100	L												
	C6-180-TH25R-115	R	25		115	75							25	2.7
	C6-180-TH25L-115	L												
<b>HSK63T</b>	HSK63T-180-TH20R-105	R	20	80	105	65	31.6	31.5	32	20	12	6	2.6	
	HSK63T-180-TH20L-105	L												
	HSK63T-180-TH25R-115	R	25		115	75							25	2.7
	HSK63T-180-TH25L-115	L												

# TURNING SIDE LOCK HOLDER

All tools are anti-rust treated.



**NEW**

## POLYGON TAPER C6

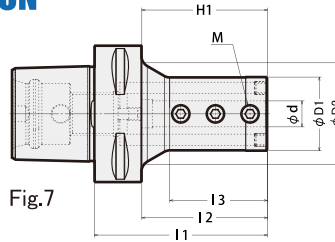


Fig.7

C6 type shown

## HSK-T

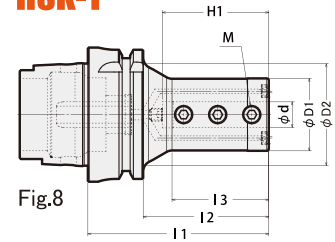
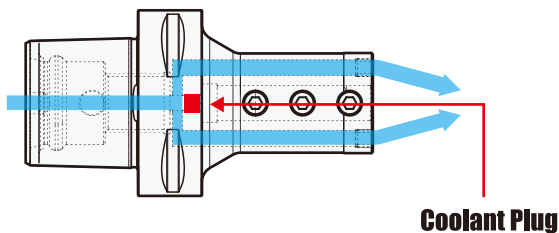


Fig.8

TAPER SHANK	CODE No.	d	D1	D2	I1	I2	I3	H1	M	Fig.	WEIGHT (kg)
<b>C6</b>	C6-SLT8 -70	8	25	40.9	70	48	32.7	46	M6 P=1	7	0.9
	C6-SLT10 -70	10	29	42					M8 P=1		1.0
	C6-SLT12 -80	12	34	47	80	58	45.1	58	M10 P=1.25		1.1
	C6-SLT16 -90	16	40	46.4	90	68	59.7	70	M12 P=1.5		1.3
	C6-SLT20 -90	20	50	-					65		M10 P=1.25
	C6-SLT25-100	25	55	-	100	78	-	75	M12 P=1.5		1.7
	C6-SLT32-110	32	64	-	110	88	-	83	M16 P=1.5		2.4
	C6-SLT40-130	40	80	70	130	108	97	98	M16 P=1.5		3.8
<b>HSK63T</b>	HSK63T-SLT8 -75	8	25	42	75	49	32.7	37	M6 P=1	8	1.0
	HSK63T-SLT10 -80	10	29		80	54	41.1	45	M8 P=1		1.2
	HSK63T-SLT12 -85	12	34	47.8	85	59	45.5	50	M10 P=1.25		1.2
	HSK63T-SLT16-100	16	40	54.7	100	74	59.7	65	M12 P=1.5		1.5
	HSK63T-SLT20-100	20	50	-					72		M10 P=1.25
	HSK63T-SLT25-105	25	55	-	105	79	-	79	M12 P=1.5		1.8
	HSK63T-SLT32-115	32	64	62	115	89	83	79	M16 P=1.5		2.5
	HSK63T-SLT40-135	40	80		135	109	103	96	M16 P=1.5		3.9

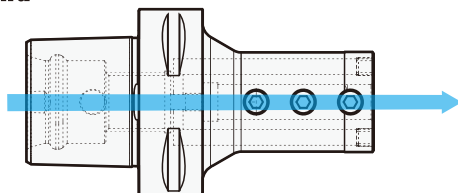
## Switching Coolant Way

### Side thru with adaptive nozzle



Coolant Plug

### Center-thru



Remove Coolant Plug

## High Pressure Coolant-thru supported (7 MPa)

- Thanks to special sealing system, high pressure coolant-thru up to 7 MPa is supported.
- Good solution for deep hole non-step drilling.